



Title Plan - DP 496238

Survey Number	DP 496238
Surveyor Reference	20413-S1 - Stage 1 & 2
Surveyor	Timothy Andrew McBride
Survey Firm	S & L Consultants Ltd
Surveyor Declaration	I Timothy Andrew McBride, being a licensed cadastral surveyor, certify that: (a) this dataset provided by me and its related survey are accurate, correct and in accordance with the Cadastral Survey Act 2002 and the Rules for Cadastral Survey 2010, and (b) the survey was undertaken by me or under my personal direction. Declared on 09 Jun 2016 01:54 PM

Survey Details

Dataset Description	Lots 1-92, 201-205, 210-212, 401, 402, 406, 407, 409, 500, 501, 503-505, 602 and 603 Being a Subdivision of Section 26 and Section 27 SO 485482		
Status	Deposited		
Land District	South Auckland	Survey Class	Class A
Submitted Date	09/06/2016	Survey Approval Date	13/06/2016
		Deposit Date	02/06/2016

Territorial Authorities

Hamilton City

Comprised In

CT 722625

Created Parcels

Parcels	Parcel Intent	Area	CT Reference
Lot 1 Deposited Plan 496238	Fee Simple Title	0.0514 Ha	729831
Lot 2 Deposited Plan 496238	Fee Simple Title	0.0451 Ha	729832
Lot 3 Deposited Plan 496238	Fee Simple Title	0.0451 Ha	729833
Lot 4 Deposited Plan 496238	Fee Simple Title	0.0452 Ha	729834
Lot 5 Deposited Plan 496238	Fee Simple Title	0.0452 Ha	729835
Lot 6 Deposited Plan 496238	Fee Simple Title	0.0453 Ha	729836
Lot 7 Deposited Plan 496238	Fee Simple Title	0.0453 Ha	729837
Lot 8 Deposited Plan 496238	Fee Simple Title	0.0611 Ha	729838
Lot 9 Deposited Plan 496238	Fee Simple Title	0.0501 Ha	729839
Lot 10 Deposited Plan 496238	Fee Simple Title	0.0614 Ha	729840
Lot 11 Deposited Plan 496238	Fee Simple Title	0.0682 Ha	729841
Lot 12 Deposited Plan 496238	Fee Simple Title	0.0601 Ha	729842
Lot 13 Deposited Plan 496238	Fee Simple Title	0.0600 Ha	729843
Lot 14 Deposited Plan 496238	Fee Simple Title	0.0450 Ha	729844
Lot 15 Deposited Plan 496238	Fee Simple Title	0.0600 Ha	729845
Lot 16 Deposited Plan 496238	Fee Simple Title	0.0600 Ha	729846
Lot 17 Deposited Plan 496238	Fee Simple Title	0.0600 Ha	729847
Lot 18 Deposited Plan 496238	Fee Simple Title	0.0451 Ha	729848
Lot 19 Deposited Plan 496238	Fee Simple Title	0.0500 Ha	729849
Lot 20 Deposited Plan 496238	Fee Simple Title	0.0471 Ha	729850

Title Plan - DP 496238

Created Parcels

Parcels	Parcel Intent	Area	CT Reference
Lot 21 Deposited Plan 496238	Fee Simple Title	0.0576 Ha	729851
Lot 22 Deposited Plan 496238	Fee Simple Title	0.0300 Ha	729852
Lot 23 Deposited Plan 496238	Fee Simple Title	0.0300 Ha	729853
Lot 24 Deposited Plan 496238	Fee Simple Title	0.0450 Ha	729854
Lot 25 Deposited Plan 496238	Fee Simple Title	0.0450 Ha	729855
Lot 26 Deposited Plan 496238	Fee Simple Title	0.0600 Ha	729856
Lot 27 Deposited Plan 496238	Fee Simple Title	0.0500 Ha	729857
Lot 28 Deposited Plan 496238	Fee Simple Title	0.0400 Ha	729858
Lot 29 Deposited Plan 496238	Fee Simple Title	0.0600 Ha	729859
	Road	0.0561 Ha	
Lot 31 Deposited Plan 496238	Fee Simple Title	0.0500 Ha	729860
Lot 32 Deposited Plan 496238	Fee Simple Title	0.0400 Ha	729861
Lot 33 Deposited Plan 496238	Fee Simple Title	0.0400 Ha	729862
Lot 34 Deposited Plan 496238	Fee Simple Title	0.0497 Ha	729863
Lot 35 Deposited Plan 496238	Fee Simple Title	0.0450 Ha	729864
Lot 36 Deposited Plan 496238	Fee Simple Title	0.0300 Ha	729865
Lot 37 Deposited Plan 496238	Fee Simple Title	0.0300 Ha	729866
Lot 38 Deposited Plan 496238	Fee Simple Title	0.0450 Ha	729867
Lot 39 Deposited Plan 496238	Fee Simple Title	0.0600 Ha	729868
Lot 40 Deposited Plan 496238	Fee Simple Title	0.0576 Ha	729869
Lot 41 Deposited Plan 496238	Fee Simple Title	0.0581 Ha	729870
Lot 42 Deposited Plan 496238	Fee Simple Title	0.0600 Ha	729871
Lot 43 Deposited Plan 496238	Fee Simple Title	0.0450 Ha	729872
Lot 44 Deposited Plan 496238	Fee Simple Title	0.0300 Ha	729873
Lot 45 Deposited Plan 496238	Fee Simple Title	0.0300 Ha	729874
Lot 46 Deposited Plan 496238	Fee Simple Title	0.0450 Ha	729875
Lot 47 Deposited Plan 496238	Fee Simple Title	0.0521 Ha	729876
Lot 48 Deposited Plan 496238	Fee Simple Title	0.0521 Ha	729877
Lot 49 Deposited Plan 496238	Fee Simple Title	0.0521 Ha	729878
Lot 50 Deposited Plan 496238	Fee Simple Title	0.0600 Ha	729879
Lot 51 Deposited Plan 496238	Fee Simple Title	0.0500 Ha	729880
Lot 52 Deposited Plan 496238	Fee Simple Title	0.0450 Ha	729881
Lot 53 Deposited Plan 496238	Fee Simple Title	0.0451 Ha	729882
Lot 54 Deposited Plan 496238	Fee Simple Title	0.0600 Ha	729883
Lot 55 Deposited Plan 496238	Fee Simple Title	0.0506 Ha	729884
Lot 56 Deposited Plan 496238	Fee Simple Title	0.0453 Ha	729885
Lot 57 Deposited Plan 496238	Fee Simple Title	0.0474 Ha	729886
Lot 58 Deposited Plan 496238	Fee Simple Title	0.0460 Ha	729887
Lot 59 Deposited Plan 496238	Fee Simple Title	0.0522 Ha	729888
Lot 60 Deposited Plan 496238	Fee Simple Title	0.0510 Ha	729889
Lot 61 Deposited Plan 496238	Fee Simple Title	0.0455 Ha	729890
Lot 62 Deposited Plan 496238	Fee Simple Title	0.0500 Ha	729891
Lot 63 Deposited Plan 496238	Fee Simple Title	0.0511 Ha	729892
Lot 64 Deposited Plan 496238	Fee Simple Title	0.0453 Ha	729893

Title Plan - DP 496238

Created Parcels

Parcels	Parcel Intent	Area	CT Reference
Lot 65 Deposited Plan 496238	Fee Simple Title	0.0452 Ha	729894
Lot 66 Deposited Plan 496238	Fee Simple Title	0.0601 Ha	729895
Lot 67 Deposited Plan 496238	Fee Simple Title	0.0502 Ha	729896
Lot 68 Deposited Plan 496238	Fee Simple Title	0.0595 Ha	729897
Lot 69 Deposited Plan 496238	Fee Simple Title	0.0400 Ha	729898
Lot 70 Deposited Plan 496238	Fee Simple Title	0.0500 Ha	729899
Lot 71 Deposited Plan 496238	Fee Simple Title	0.0600 Ha	729900
Lot 72 Deposited Plan 496238	Fee Simple Title	0.0450 Ha	729901
Lot 73 Deposited Plan 496238	Fee Simple Title	0.0450 Ha	729902
Lot 74 Deposited Plan 496238	Fee Simple Title	0.0300 Ha	729903
Lot 75 Deposited Plan 496238	Fee Simple Title	0.0300 Ha	729904
Lot 76 Deposited Plan 496238	Fee Simple Title	0.0581 Ha	729905
Lot 77 Deposited Plan 496238	Fee Simple Title	0.0576 Ha	729906
Lot 78 Deposited Plan 496238	Fee Simple Title	0.0581 Ha	729907
Lot 79 Deposited Plan 496238	Fee Simple Title	0.0600 Ha	729908
Lot 80 Deposited Plan 496238	Fee Simple Title	0.0450 Ha	729909
Lot 81 Deposited Plan 496238	Fee Simple Title	0.0300 Ha	729910
Lot 82 Deposited Plan 496238	Fee Simple Title	0.0300 Ha	729911
Lot 83 Deposited Plan 496238	Fee Simple Title	0.0450 Ha	729912
Lot 84 Deposited Plan 496238	Fee Simple Title	0.0500 Ha	729913
Lot 85 Deposited Plan 496238	Fee Simple Title	0.0400 Ha	729914
Lot 86 Deposited Plan 496238	Fee Simple Title	0.0400 Ha	729915
Lot 87 Deposited Plan 496238	Fee Simple Title	0.0500 Ha	729916
Lot 88 Deposited Plan 496238	Fee Simple Title	0.0450 Ha	729917
Lot 89 Deposited Plan 496238	Fee Simple Title	0.0300 Ha	729918
Lot 90 Deposited Plan 496238	Fee Simple Title	0.0300 Ha	729919
Lot 91 Deposited Plan 496238	Fee Simple Title	0.0450 Ha	729920
Lot 92 Deposited Plan 496238	Fee Simple Title	0.0600 Ha	729921
Lot 210 Deposited Plan 496238	Vesting on Deposit for Local Purpose Reserve	0.0014 Ha	729922
Lot 211 Deposited Plan 496238	Vesting on Deposit for Local Purpose Reserve	0.0001 Ha	729923
Lot 212 Deposited Plan 496238	Vesting on Deposit for Local Purpose Reserve	0.0018 Ha	729924
Lot 401 Deposited Plan 496238	Vesting on Deposit for Local Purpose Reserve	0.3169 Ha	729925
Lot 402 Deposited Plan 496238	Vesting on Deposit for Local Purpose Reserve	0.5019 Ha	729926
Lot 406 Deposited Plan 496238	Vesting on Deposit for Local Purpose Reserve	0.0207 Ha	729927
Lot 407 Deposited Plan 496238	Vesting on Deposit for Local Purpose Reserve	0.0208 Ha	729928
Lot 409 Deposited Plan 496238	Vesting on Deposit for Recreation Reserve (Territorial Authority)	0.1001 Ha	729929

Title Plan - DP 496238

Created Parcels

Parcels	Parcel Intent	Area	CT Reference
Lot 500 Deposited Plan 496238	Fee Simple Title	1.2703 Ha	729930
Lot 501 Deposited Plan 496238	Fee Simple Title	2.0690 Ha	729931
Lot 602 Deposited Plan 496238	Fee Simple Title	2.6303 Ha	729932
Lot 603 Deposited Plan 496238	Fee Simple Title	0.9268 Ha	729932
	Road	0.0281 Ha	
	Road	0.7387 Ha	
	Road	0.7881 Ha	
	Road	0.5301 Ha	
	Road	0.7966 Ha	
	Road	0.0037 Ha	
	Road	0.0940 Ha	
	Road	0.1605 Ha	
Area A Deposited Plan 496238	Easement		
Area B Deposited Plan 496238	Easement		
Area C Deposited Plan 496238	Easement		
Total Area		<hr/> 15.4293 Ha	

www.s&l.co.nz | 09 486 9999 | 100 Victoria Park Road, Auckland



S&L CONSULTANTS LTD
SURVEYORS - ENGINEERS - PLANNERS

S&L File: 20413-S1&2

Land Registration District

South Auckland

Plan Number

DP 496238

Territorial Authority (the Council)

Hamilton City Council

Schedule of Proposed Easements

Purpose	Shown	Servient Tenement	Dominant Tenement
Right of Way	A	Lot 11 <i>hereon</i>	Lot 10 <i>hereon</i>
	B	Lot 10 <i>hereon</i>	Lot 11 <i>hereon</i>

Memorandum of Easements in Gross

Purpose	Shown	Servient Tenement	Grantee
Right of Way	C	Lot 18 <i>hereon</i>	Hamilton City Council

www.s&l.co.nz | 09 486 9999 | 100 Victoria Park Road, Auckland



S&L CONSULTANTS LTD
SURVEYORS - ENGINEERS - PLANNERS

S&L File: 20413-S1&2

Land Registration District

South Auckland

Plan Number

DP 496238

Territorial Authority (the Council)

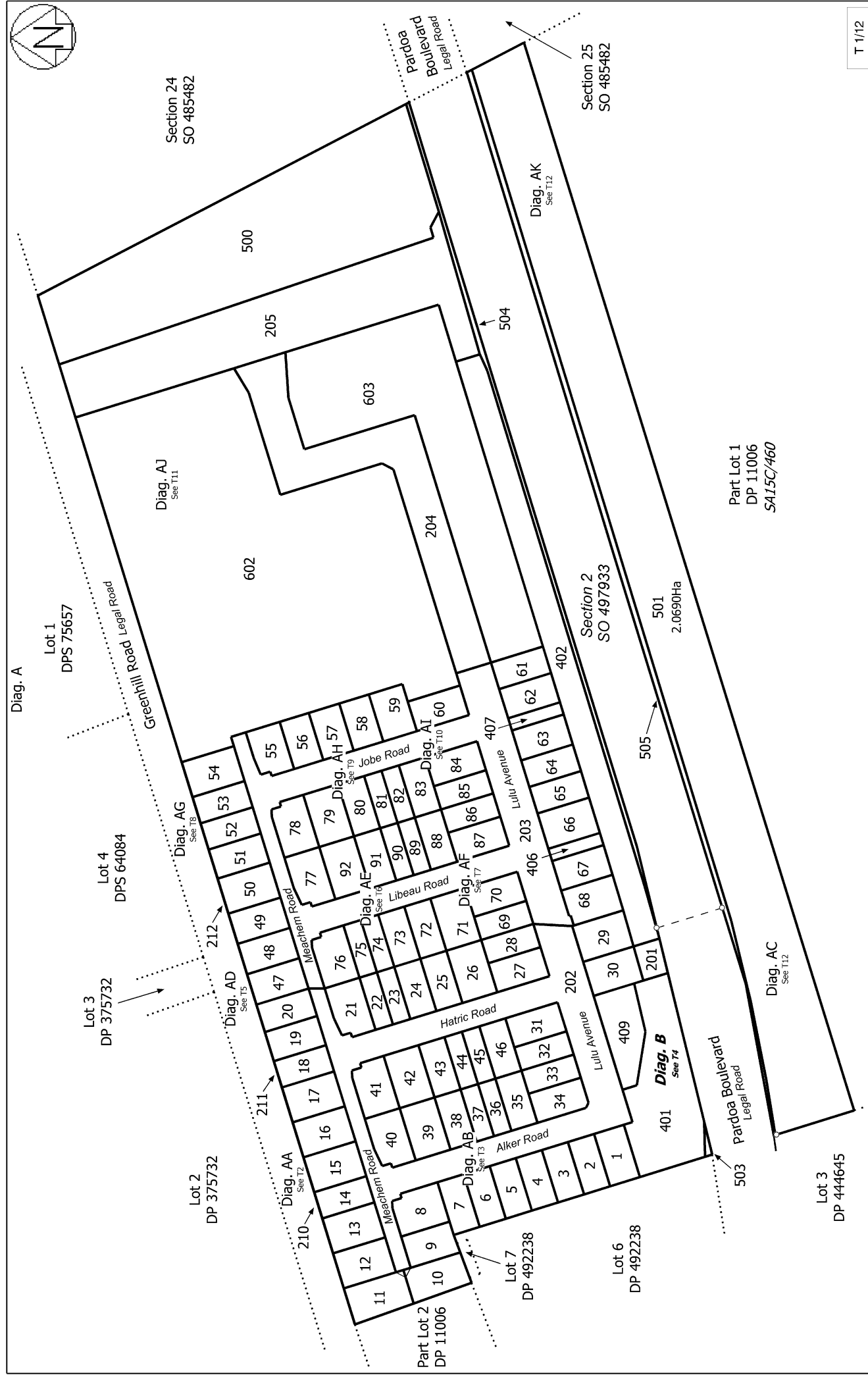
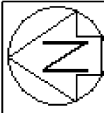
Hamilton City Council

Amalgamation Conditions

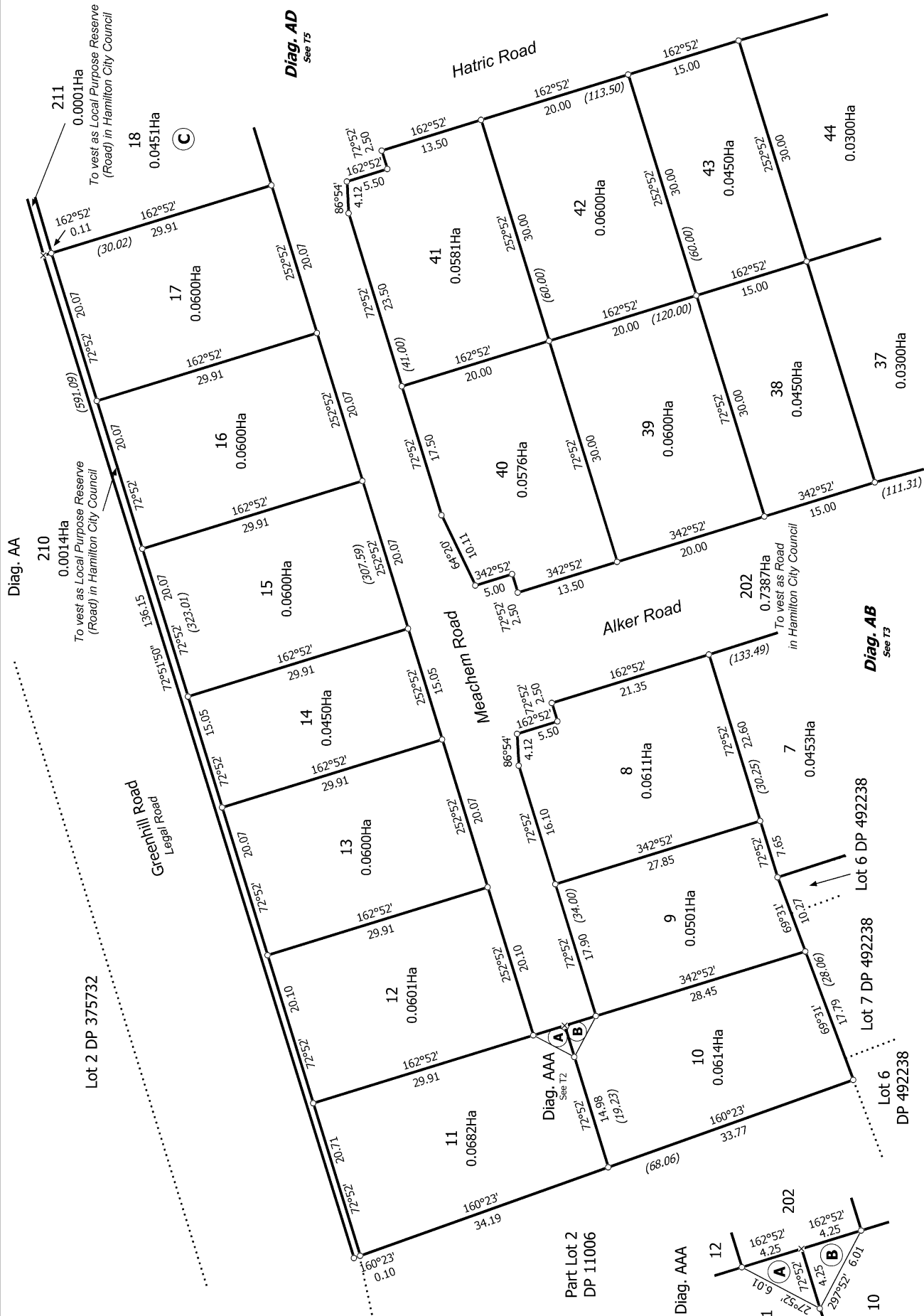
(Pursuant to s220 Resource Management Act 1991)

That pursuant to section 220(1)(b)(ii) Resource Management Act 1991, Lot 501 hereon and Pt Lot 1 DP 11006 be held in one Certificate of Title. [See LINZ Request 1298443]

That Lots 602 & 603 hereon be held in the one Certificate of Title. [See LINZ Request 1298443]



T 1/12			
Land District: South Auckland	Lots 1-92, 201-205, 210-212, 401, 402, 406, 407, 409, 500, 501, 503-505, 602 and 603 Being a Subdivision of Section 26 and Section 27 SO 485482	Surveyor: Timothy Andrew McBride Firm: S & L Consultants Ltd	Title Plan DP 496238
Digitally Generated Plan Generated on: 15/06/2016 11:57pm Page 7 of 18		Deposited on: 2/06/2016	



T 2/12

Land District: South Auckland

Digitally Generated Plan

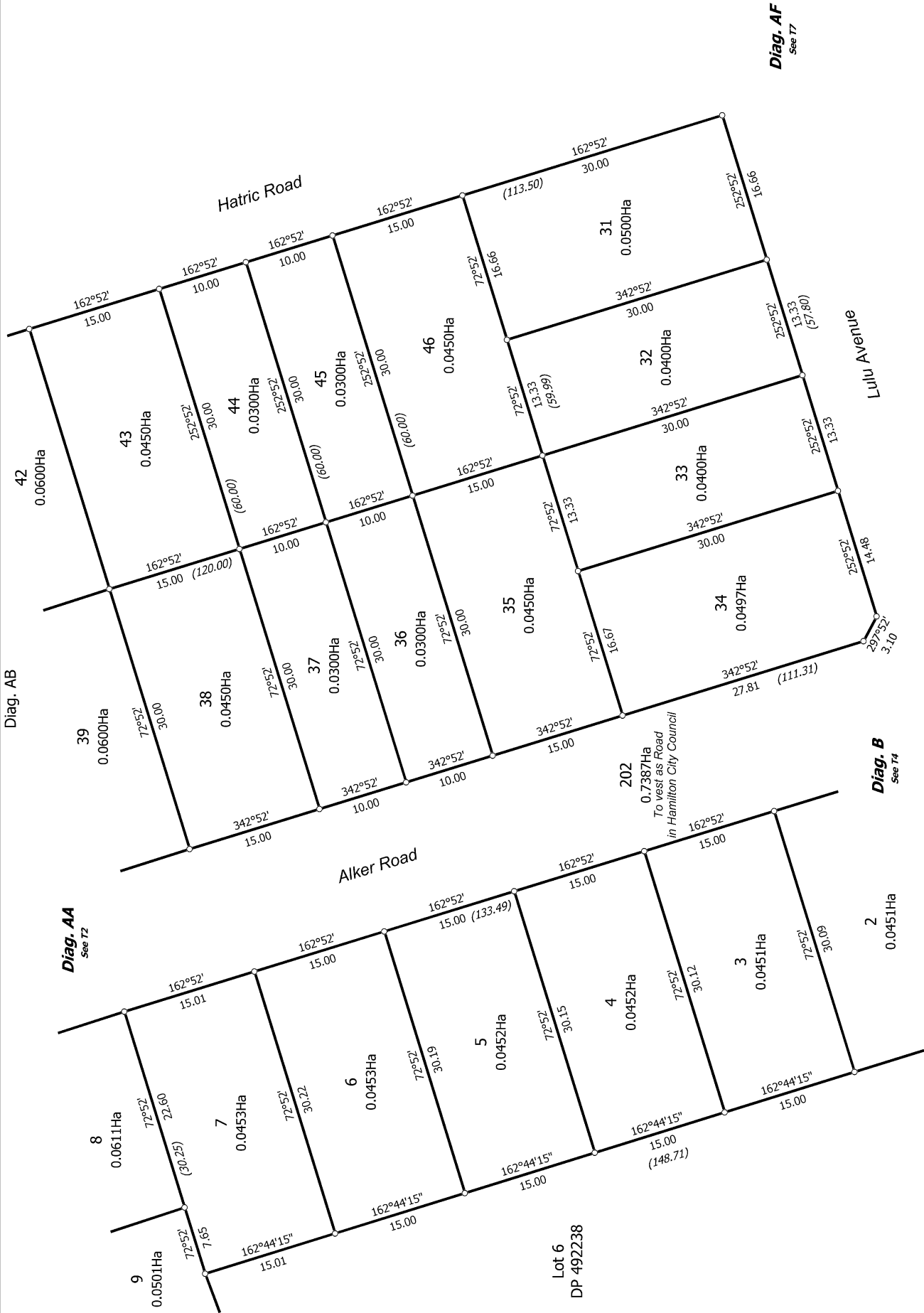
Generated on: 15/06/2016 11:57pm Page 8 of 18

Lots 1-92, 201-205, 210-212, 401, 402, 406, 407, 409, 500, 501, 503-505, 602
and 603 Being a Subdivision of Section 26 and Section 27 SO 485482

Surveyor: Timothy Andrew McBride
Firm: S & L Consultants Ltd

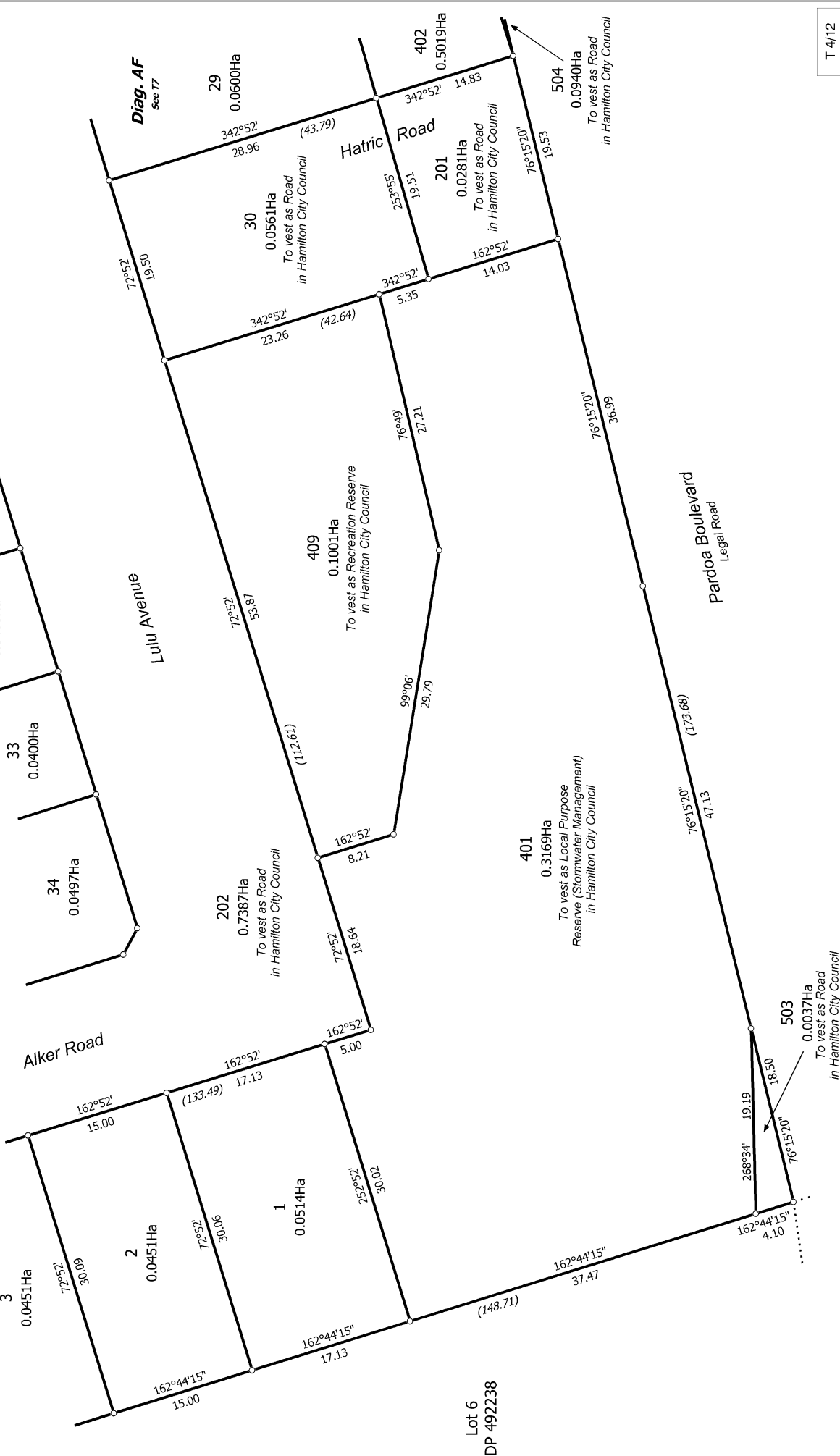
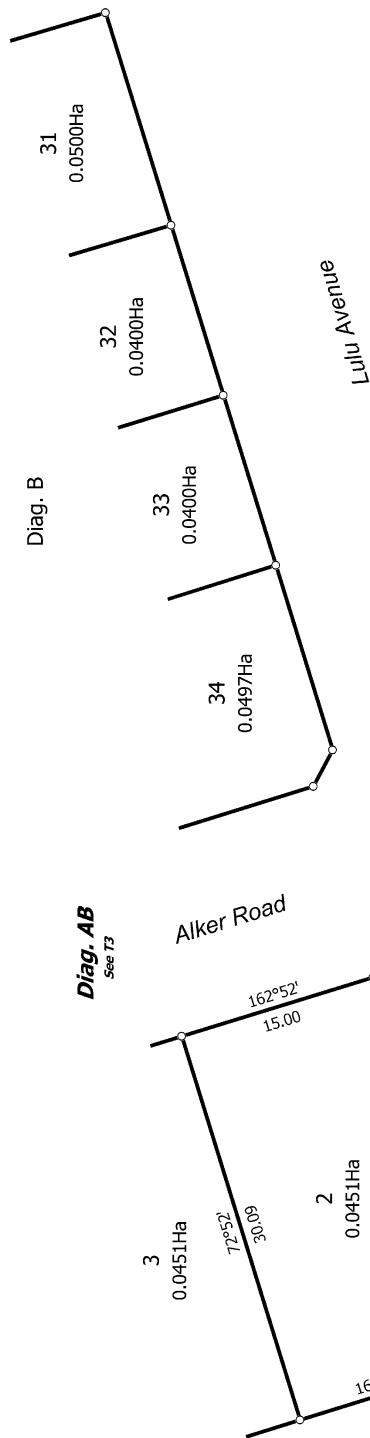
Title Plan
DP 496238

Deposited on: 2/06/2016



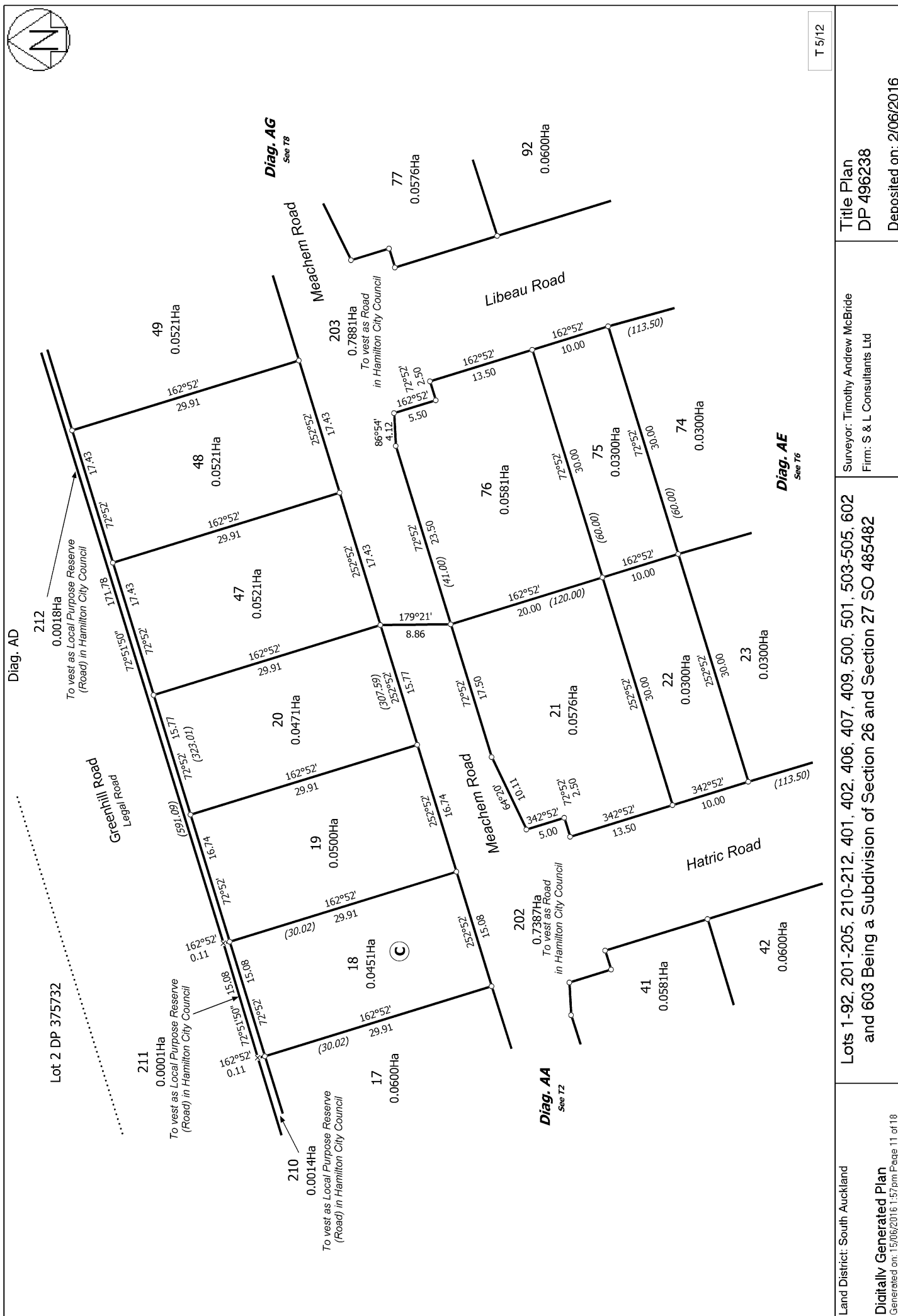
T 3/12

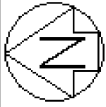
Land District: South Auckland	Lots 1-92, 201-205, 210-212, 401, 402, 406, 407, 409, 500, 501, 503-505, 602 and 603 Being a Subdivision of Section 26 and Section 27 SO 485482	Surveyor: Timothy Andrew McBride Firm: S & L Consultants Ltd	Title Plan DP 496238 Deposited on: 2/06/2016
Digitally Generated Plan Generated on: 15/06/2016 1:57pm Page 9 of 18			



T 4/12

Land District: South Auckland	Lots 1-92, 201-205, 210-212, 401, 402, 406, 407, 409, 500, 501, 503-505, 602 and 603 Being a Subdivision of Section 26 and Section 27 SO 485482	Surveyor: Timothy Andrew McBride Firm: S & L Consultants Ltd	Title Plan DP 496238
Digitally Generated Plan Generated on: 15/06/2016 1:57pm Page 10 of 18		Deposited on: 2/06/2016	





Diag. AE

Diag. AD
See T5

Diag. AH
See T9

Diag. AF
See T7

Diag. AB
See T3

T 6/12

Land District: South Auckland

Digitally Generated Plan

Generated on: 15/06/2016 11:57pm Page 12 of 18

Lots 1-92, 201-205, 210-212, 401, 402, 406, 407, 409, 500, 501, 503-505, 602
and 603 Being a Subdivision of Section 26 and Section 27 SO 485482

Surveyor: Timothy Andrew McBride
Firm: S & L Consultants Ltd

Title Plan
DP 496238

Deposited on: 2/06/2016



T 7/12

Land District: South Auckland

Digitally Generated Plan

Generated on: 15/06/2016 11:57pm Page 13 of 18

Lots 1-92, 201-205, 210-212, 401, 402, 406, 407, 409, 500, 501, 503-505, 602 and 603 Being a Subdivision of Section 26 and Section 27 SO 485482

Surveyor: Timothy Andrew McBride
Firm: S & L Consultants Ltd

Title Plan
DP 496238

Deposited on: 2/06/2016



Diag. AG

Lot 4 DPS 64084



T 8/12

Land District: South Auckland

Digitally Generated Plan

Generated on: 15/06/2016 11:57pm Page 14 of 18

Lots 1-92, 201-205, 210-212, 401, 402, 406, 407, 409, 500, 501, 503-505, 602
and 603 Being a Subdivision of Section 26 and Section 27 SO 485482

Surveyor: Timothy Andrew McBride
Firm: S & L Consultants Ltd

Title Plan
DP 496238

Deposited on: 2/06/2016



Diag. AH

Diag. AG
See T8

Diag. AJ
See T11

Diag. AI
See T10

Diag. AE
See T6



T 9/12

Land District: South Auckland

Digitally Generated Plan

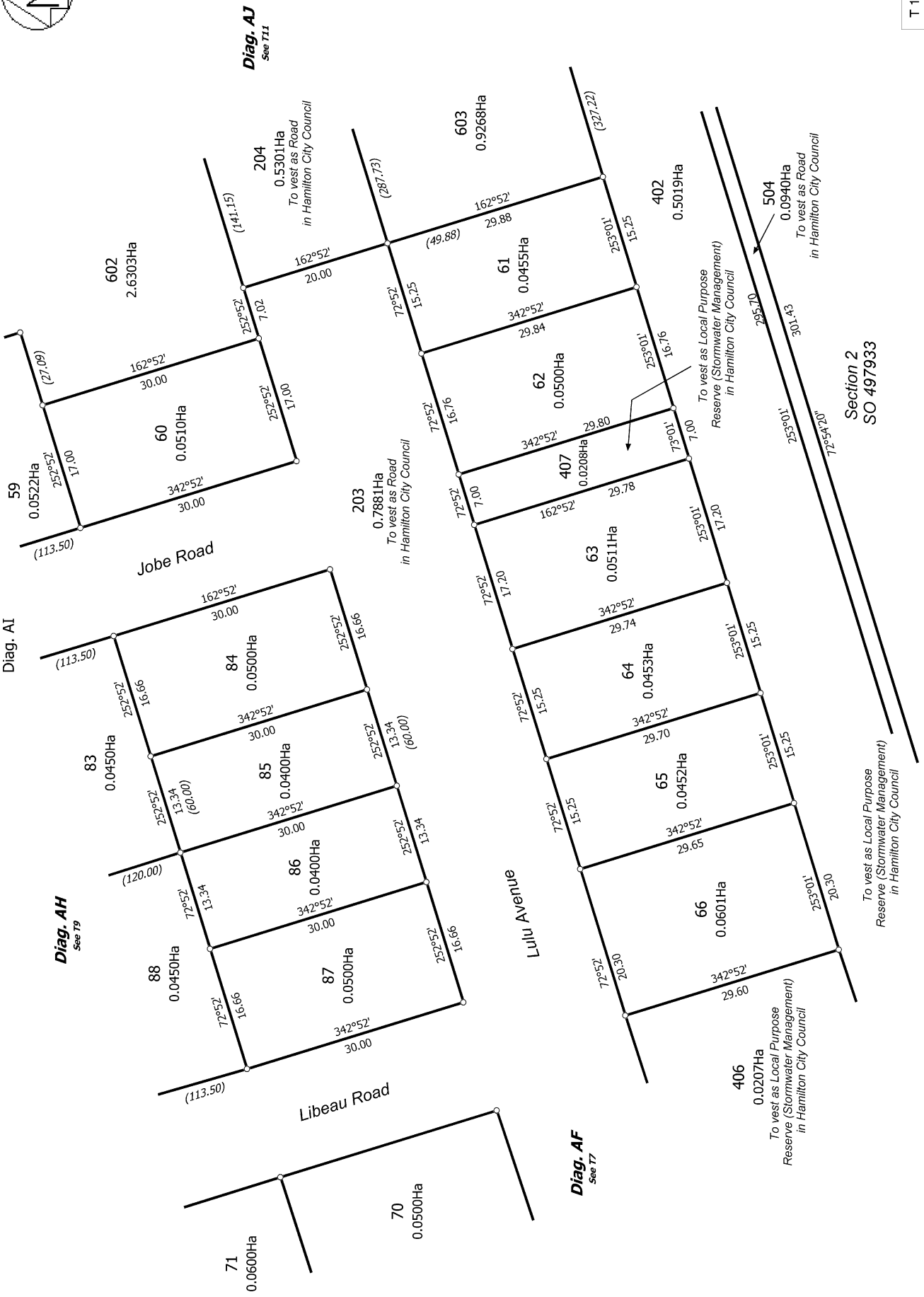
Generated on: 15/06/2016 11:57pm Page 15 of 18

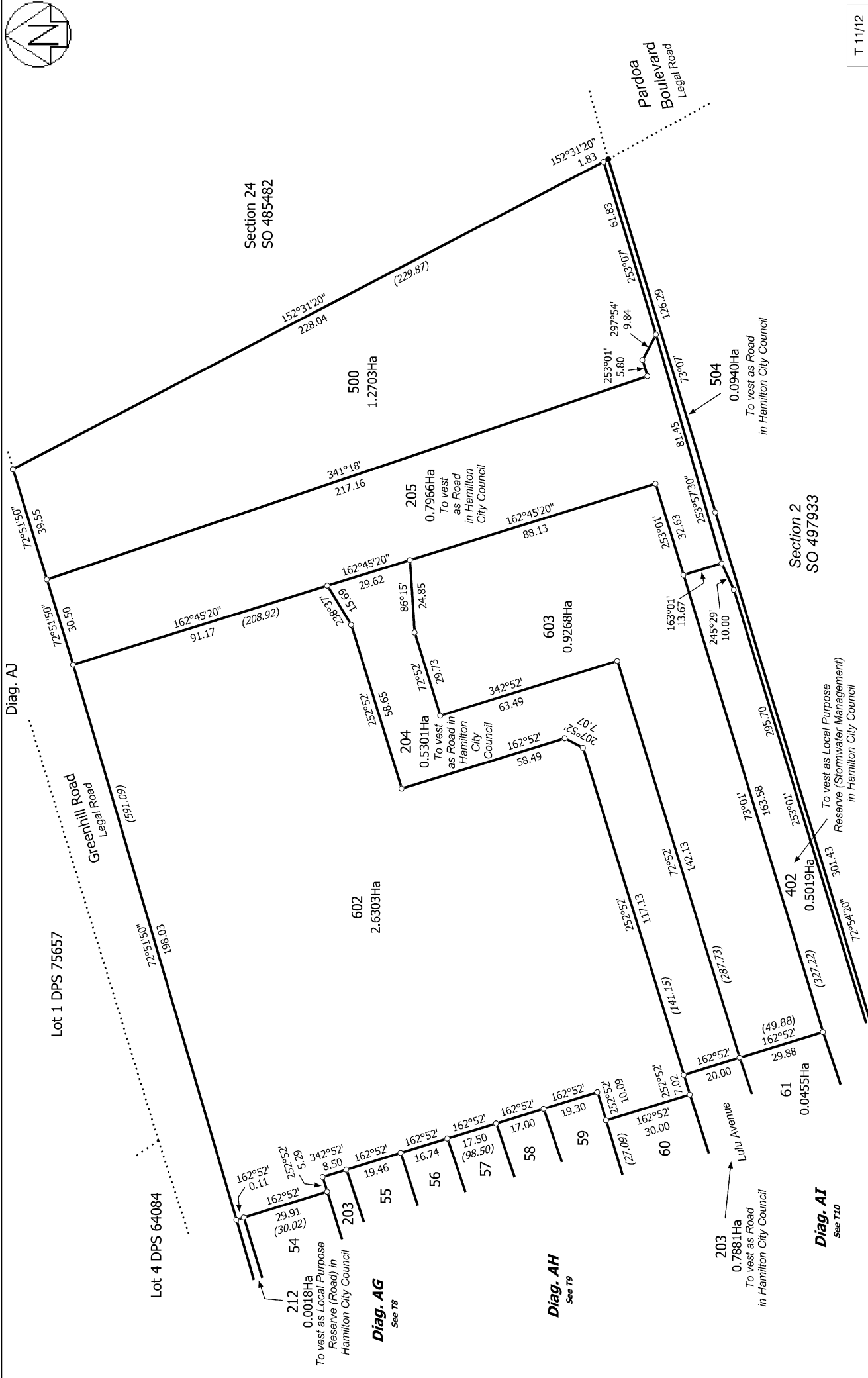
Lots 1-92, 201-205, 210-212, 401, 402, 406, 407, 409, 500, 501, 503-505, 602
and 603 Being a Subdivision of Section 26 and Section 27 SO 485482

Surveyor: Timothy Andrew McBride
Firm: S & L Consultants Ltd

Title Plan
DP 496238

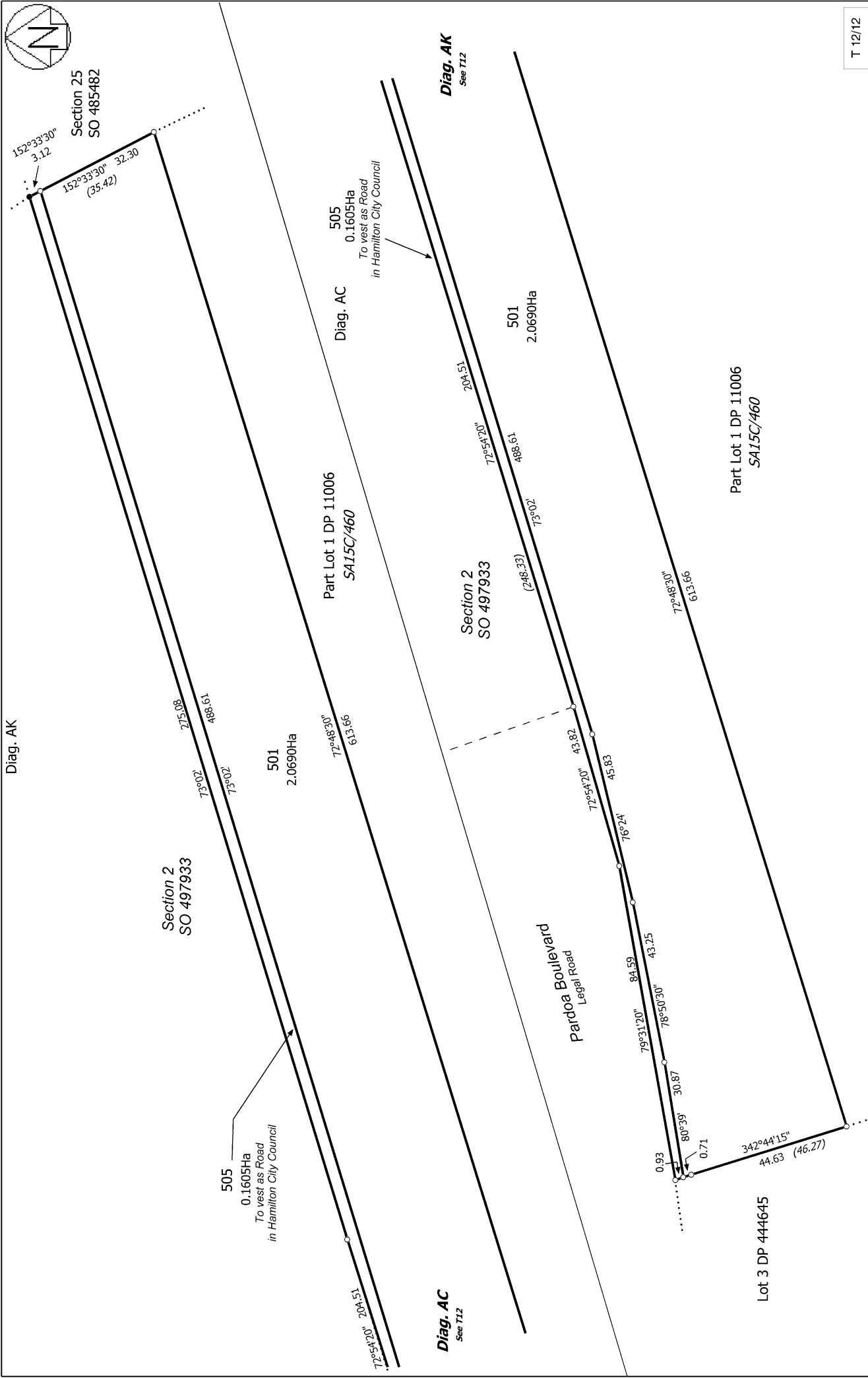
Deposited on: 2/06/2016





T 11/12

Land District: South Auckland	Lots 1-92, 201-205, 210-212, 401, 402, 406, 407, 409, 500, 501, 503-505, 602 and 603 Being a Subdivision of Section 26 and Section 27 SO 485482	Surveyor: Timothy Andrew McBride Firm: S & L Consultants Ltd	Title Plan DP 496238
Digitally Generated Plan Generated on: 15/06/2016 11:57pm Page 17 of 18		Deposited on: 2/06/2016	



T 12/12			
Land District: South Auckland	Lots 1-92, 201-205, 210-212, 401, 402, 406, 407, 409, 500, 501, 503-505, 602 and 603 Being a Subdivision of Section 26 and Section 27 SO 485482	Surveyor: Timothy Andrew McBride Firm: S & L Consultants Ltd	Title Plan DP 496238 Deposited on: 2/06/2016
Digitally Generated Plan Generated on: 15/06/2016 11:57pm Page 18 of 18			