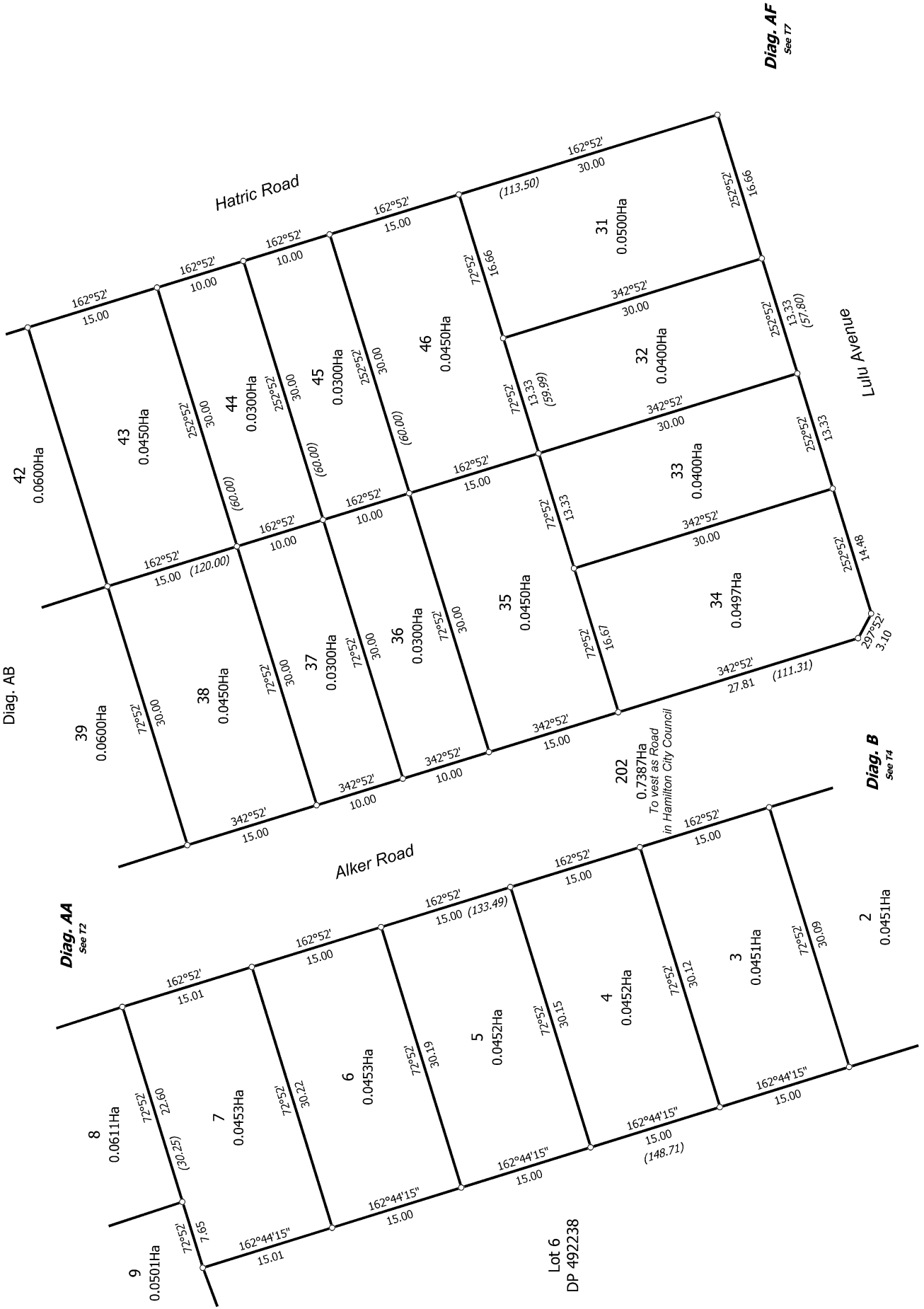
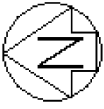


T 2/12

Land District: South Auckland	Surveyor: Timothy Andrew McBride Firm: S & L Consultants Ltd	Title Plan DP 496238	Deposited on: 2/06/2016
Lots 1-92, 201-205, 210-212, 401, 402, 406, 407, 409, 500, 501, 503-505, 602 and 603 Being a Subdivision of Section 26 and Section 27 SO 485482			
Digitally Generated Plan Generated on: 15/06/2016 11:57:00am Page 8 of 18			



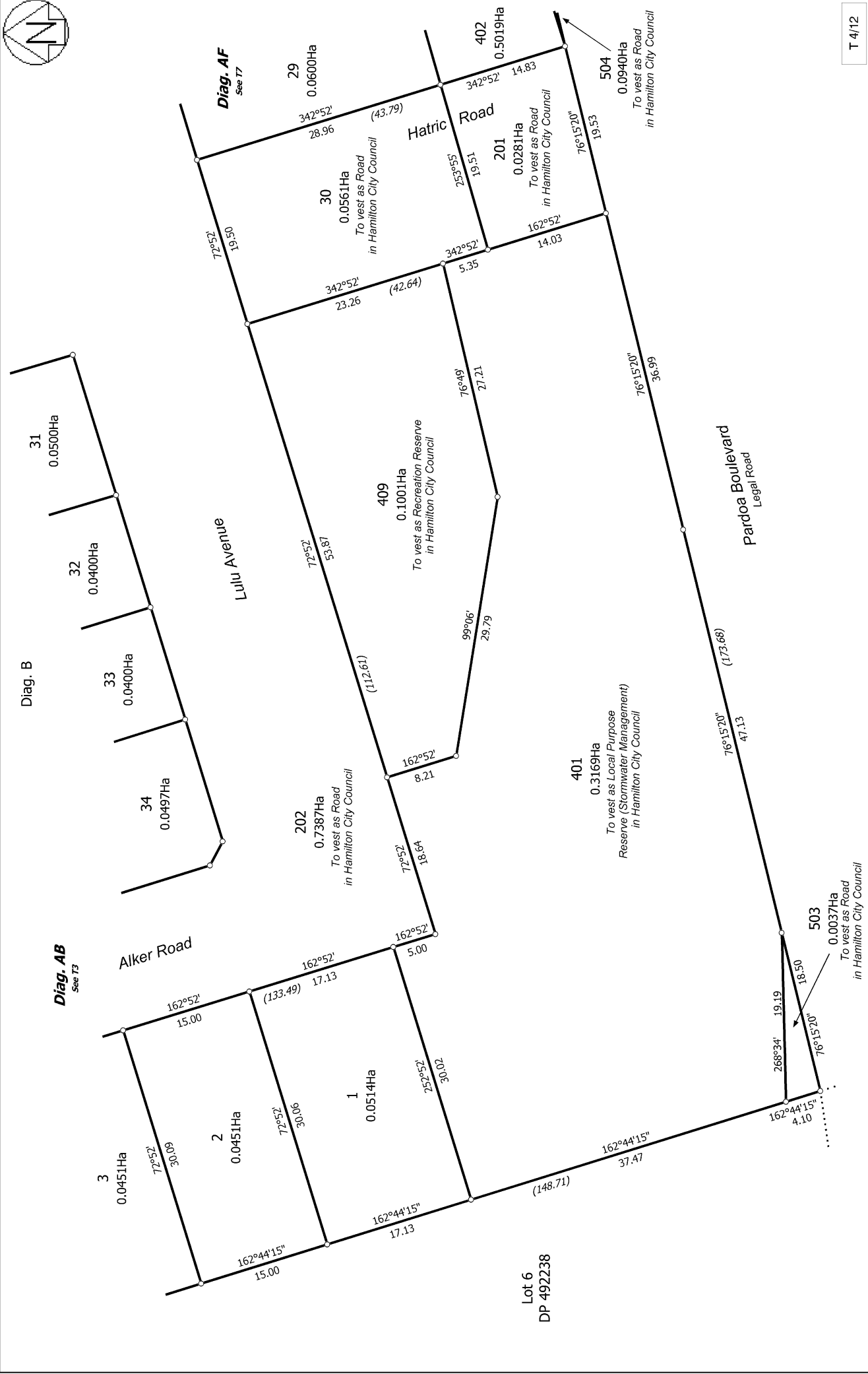
T 3/12

Title Plan
DP 496238
Deposited on: 2/06/2016

Surveyor: Timothy Andrew McBride
Firm: S & L Consultants Ltd

Lots 1-92, 201-205, 210-212, 401, 402, 406, 407, 409, 500, 501, 503-505, 602
and 603 Being a Subdivision of Section 26 and Section 27 SO 485482

Land District: South Auckland
Digitally Generated Plan
Generated on: 15/06/2016 1:57pm Page 9 of 18



T 4/12

<p>Land District: South Auckland</p> <p>Digitally Generated Plan</p> <p>Generated on: 15/06/2016 1:57pm Page 10 of 18</p>	<p>Lots 1-92, 201-205, 210-212, 401, 402, 406, 407, 409, 500, 501, 503-505, 602 and 603 Being a Subdivision of Section 26 and Section 27 SO 485482</p>	<p>Surveyor: Timothy Andrew McBride</p> <p>Firm: S & L Consultants Ltd</p>	<p>Title Plan</p> <p>DP 496238</p> <p>Deposited on: 2/06/2016</p>
--	---	--	---



Diag. AD

Lot 2 DP 375732

Greenhill Road
Legal Road



Diag. AG
See T8

Diag. AA
See T2

Diag. AE
See T6

T 5/12

Land District: South Auckland

Digitally Generated Plan

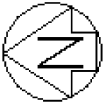
Generated on: 15/06/2016 1:57pm Page 11 of 18

Lots 1-92, 201-205, 210-212, 401, 402, 406, 407, 409, 500, 501, 503-505, 602 and 603 Being a Subdivision of Section 26 and Section 27 SO 485482

Surveyor: Timothy Andrew McBride
Firm: S & L Consultants Ltd

Title Plan
DP 496238

Deposited on: 2/06/2016



Diag. AE
See T6

Diag. AF

Diag. AI
See T10

Diag. B
See T4

Diag. AB
See T3

Section 2
SO 497933

T 7/12

Land District: South Auckland

Digitally Generated Plan

Generated on: 15/06/2016 1:57pm Page 13 of 18

Lots 1-92, 201-205, 210-212, 401, 402, 406, 407, 409, 500, 501, 503-505, 602 and 603 Being a Subdivision of Section 26 and Section 27 SO 485482

Surveyor: Timothy Andrew McBride
Firm: S & L Consultants Ltd

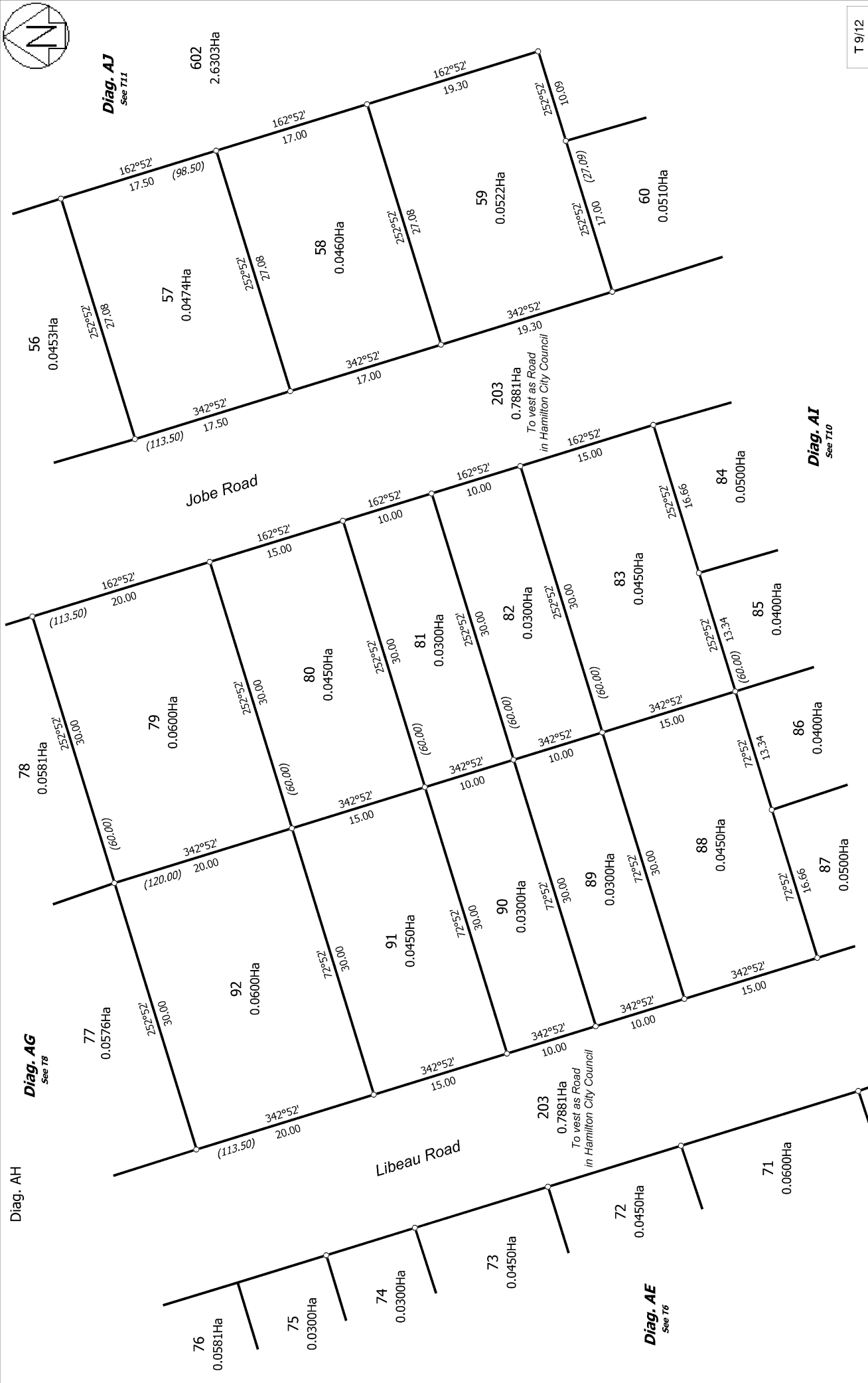
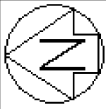
Title Plan
DP 496238

Deposited on: 2/06/2016



T 8/12

<p>Land District: South Auckland</p> <p>Digitally Generated Plan</p> <p>Generated on: 15/06/2016 1:57pm Page 14 of 18</p>	<p>Lots 1-92, 201-205, 210-212, 401, 402, 406, 407, 409, 500, 501, 503-505, 602 and 603 Being a Subdivision of Section 26 and Section 27 SO 485482</p>	<p>Surveyor: Timothy Andrew McBride</p> <p>Firm: S & L Consultants Ltd</p>	<p>Title Plan</p> <p>DP 496238</p> <p>Deposited on: 2/06/2016</p>
--	--	--	---



T 9/12

Land District: South Auckland

Digitally Generated Plan

Generated on: 15/06/2016 11:57am Page: 15 of 18

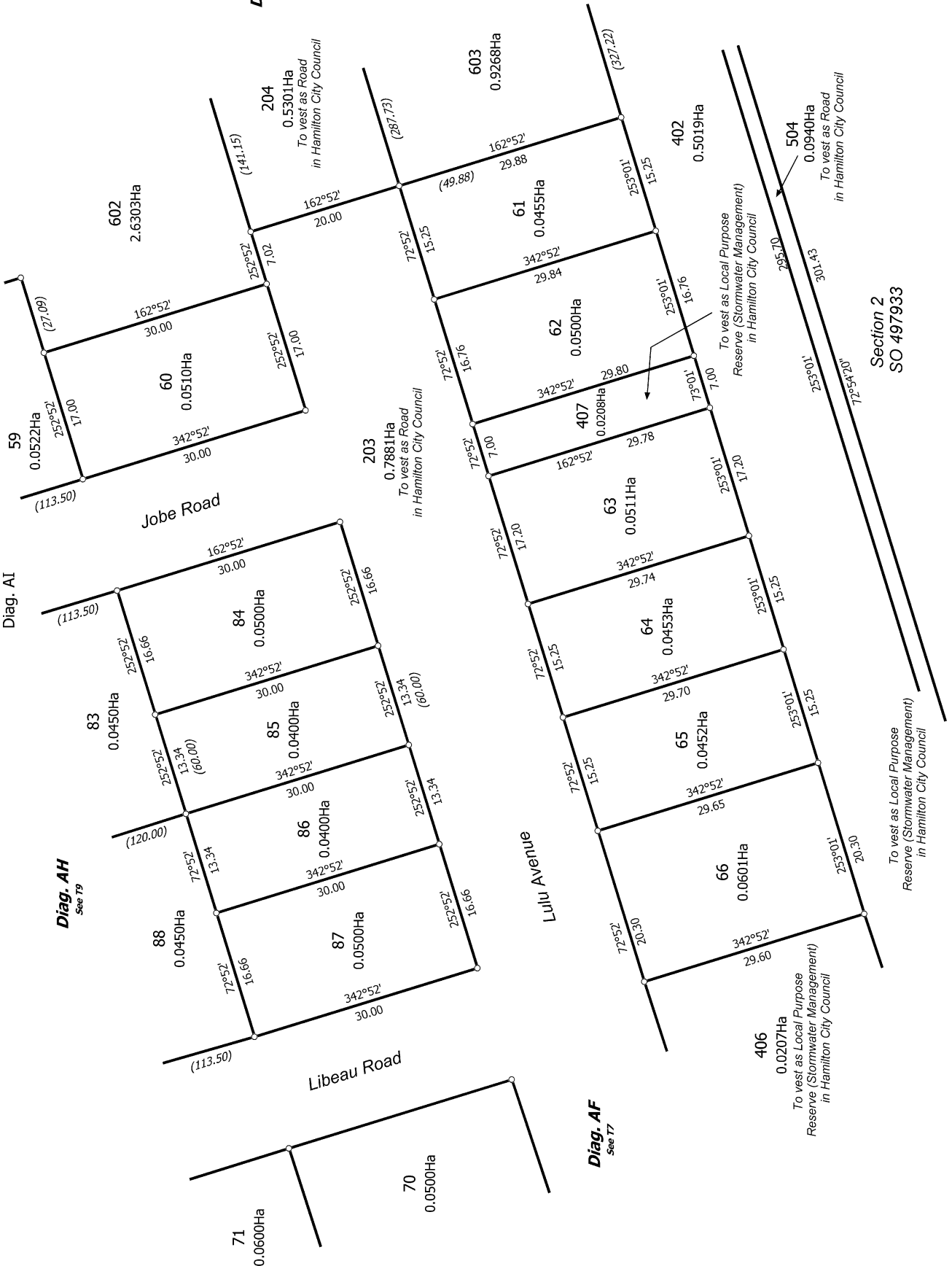
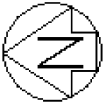
Surveyor: Timothy Andrew McBride

Firm: S & L Consultants Ltd

Title Plan
DP 496238

Lots 1-92, 201-205, 210-212, 401, 402, 406, 407, 409, 500, 501, 503-505, 602 and 603 Being a Subdivision of Section 26 and Section 27 SO 485482

Deposited on: 2/06/2016



T 10/12

Land District: South Auckland

Digitally Generated Plan
Generated on: 15/06/2016 11:57am Page 16 of 18

Lots 1-92, 201-205, 210-212, 401, 402, 406, 407, 409, 500, 501, 503-505, 602 and 603 Being a Subdivision of Section 26 and Section 27 SO 485482

Surveyor: Timothy Andrew McBride
Firm: S & L Consultants Ltd

Title Plan
DP 496238

Deposited on: 2/06/2016

Section 2
SO 497933

To vest as Local Purpose Reserve (Stormwater Management) in Hamilton City Council

To vest as Local Purpose Reserve (Stormwater Management) in Hamilton City Council

To vest as Local Purpose Reserve (Stormwater Management) in Hamilton City Council

To vest as Road in Hamilton City Council

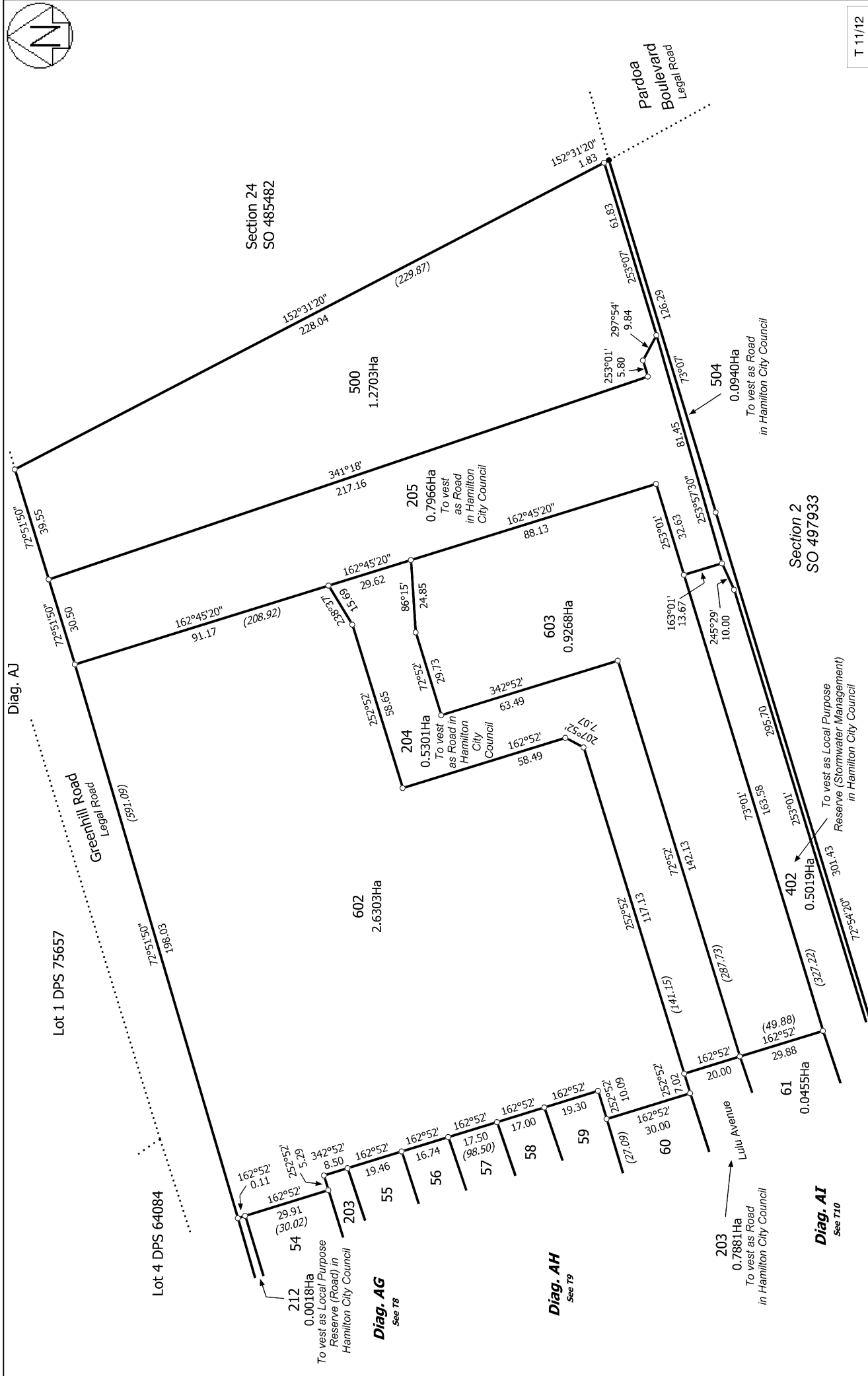
To vest as Road in Hamilton City Council

Diag. AJ
See T11

Diag. AF
See T7

Diag. AH
See T9

Diag. AI



T 11/12

<p>Land District: South Auckland</p> <p>Digitally Generated Plan</p> <p>Generated on: 15/06/2016 1:57pm Page: 17 of 18</p>	<p>Lots 1-92, 201-205, 210-212, 401, 402, 406, 407, 409, 500, 501, 503-505, 602 and 603 Being a Subdivision of Section 26 and Section 27 SO 485482</p> <p>Surveyor: Timothy Andrew McBride Firm: S & L Consultants Ltd</p>	<p>Title Plan DP 496238</p> <p>Deposited on: 2/06/2016</p>
---	---	---