



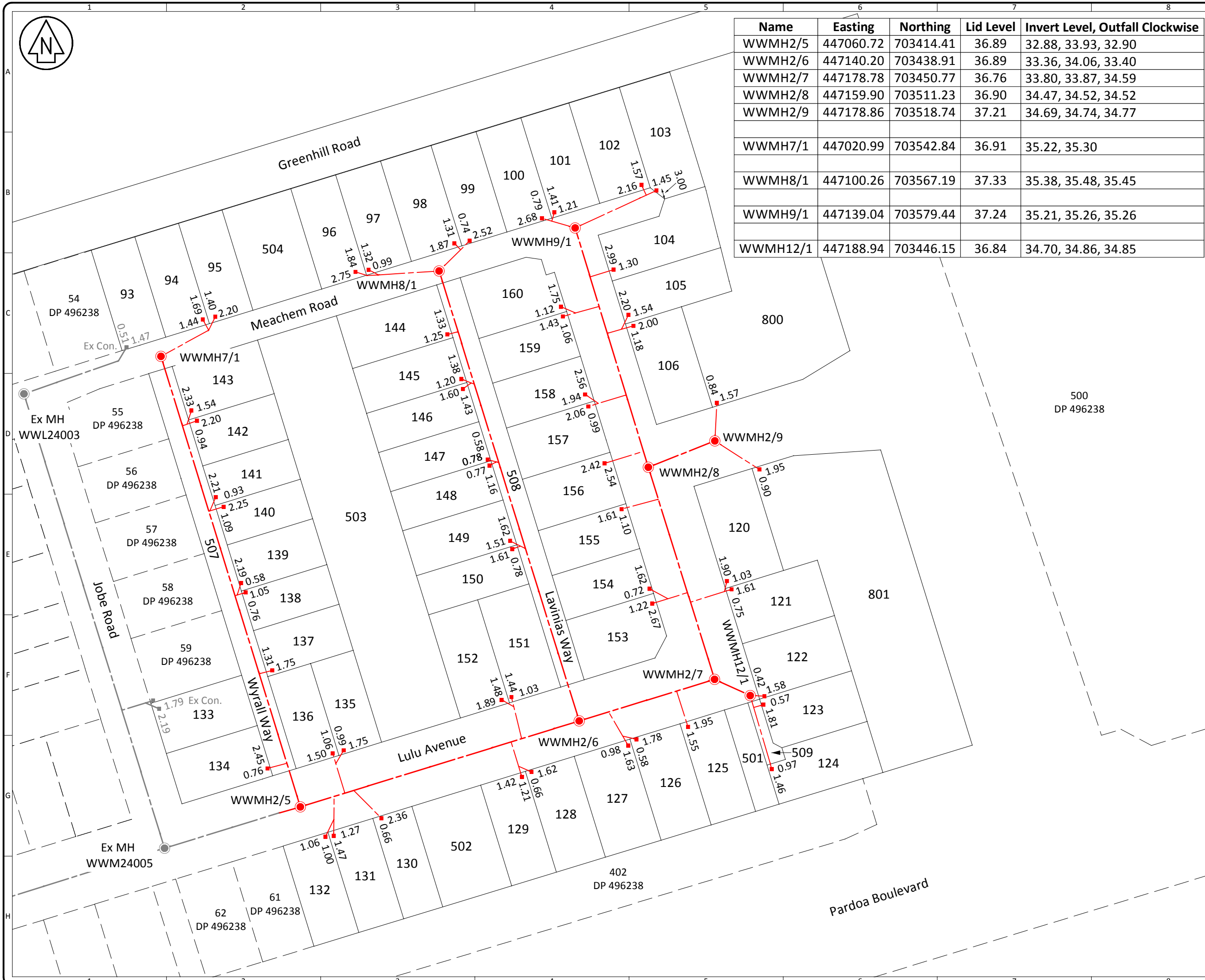
Name	Easting	Northing	Lid Level	Invert Level, Outfall Clockwise
WWMH2/5	447060.72	703414.41	36.89	32.88, 33.93, 32.90
WWMH2/6	447140.20	703438.91	36.89	33.36, 34.06, 33.40
WWMH2/7	447178.78	703450.77	36.76	33.80, 33.87, 34.59
WWMH2/8	447159.90	703511.23	36.90	34.47, 34.52, 34.52
WWMH2/9	447178.86	703518.74	37.21	34.69, 34.74, 34.77
WWMH7/1	447020.99	703542.84	36.91	35.22, 35.30
WWMH8/1	447100.26	703567.19	37.33	35.38, 35.48, 35.45
WWMH9/1	447139.04	703579.44	37.24	35.21, 35.26, 35.26
WWMH12/1	447188.94	703446.15	36.84	34.70, 34.86, 34.85

**Notes:**

Coordinates are in terms of Mt Eden 2000 Circuit

Levels are in terms of Moturiki Vertical Datum 1953  
 Origin of Levels: SS507 SO 42451 (EP6K) RL:44.04  
 Source: LINZ Geodetic Database  
 Location: Corner of Carrs Road and Tramway Road (under cover)

Lot Connections and Service Lines plotted from data supplied by West Construction



CD	REV	ISSUED FOR WORK CLEARANCE	DATE
0		05/18	

NAME	DATE	SIGNED
Surveyed	SRC	Various
Designed	SM	07/17
Drawn	SRC	05/18
Checked	SRC	05/18
Approved	TMB	05/18

HCC Ref:  
011.2015.6025.007

**S & L CONSULTANTS LTD**  
 SURVEYORS - ENGINEERS - PLANNERS  
 36 Kereti Street, Mt Maunganui, New Zealand  
 P.O. Box 231 Ph:(07)577-6069  
 Fax:(07)577-6065  
 Email: slconsultants@slga.co.nz  
 Web Site: www.slga.co.nz

Title  
**Wastewater Asbuilt Plan Stage 4**

Copyright on this drawing is reserved  
 Original Scales @ A3 Date  
**1:1000** 05/18  
 Do Not Scale Dimensions  
 Drawing No Revision  
**20413 - AB10** 0



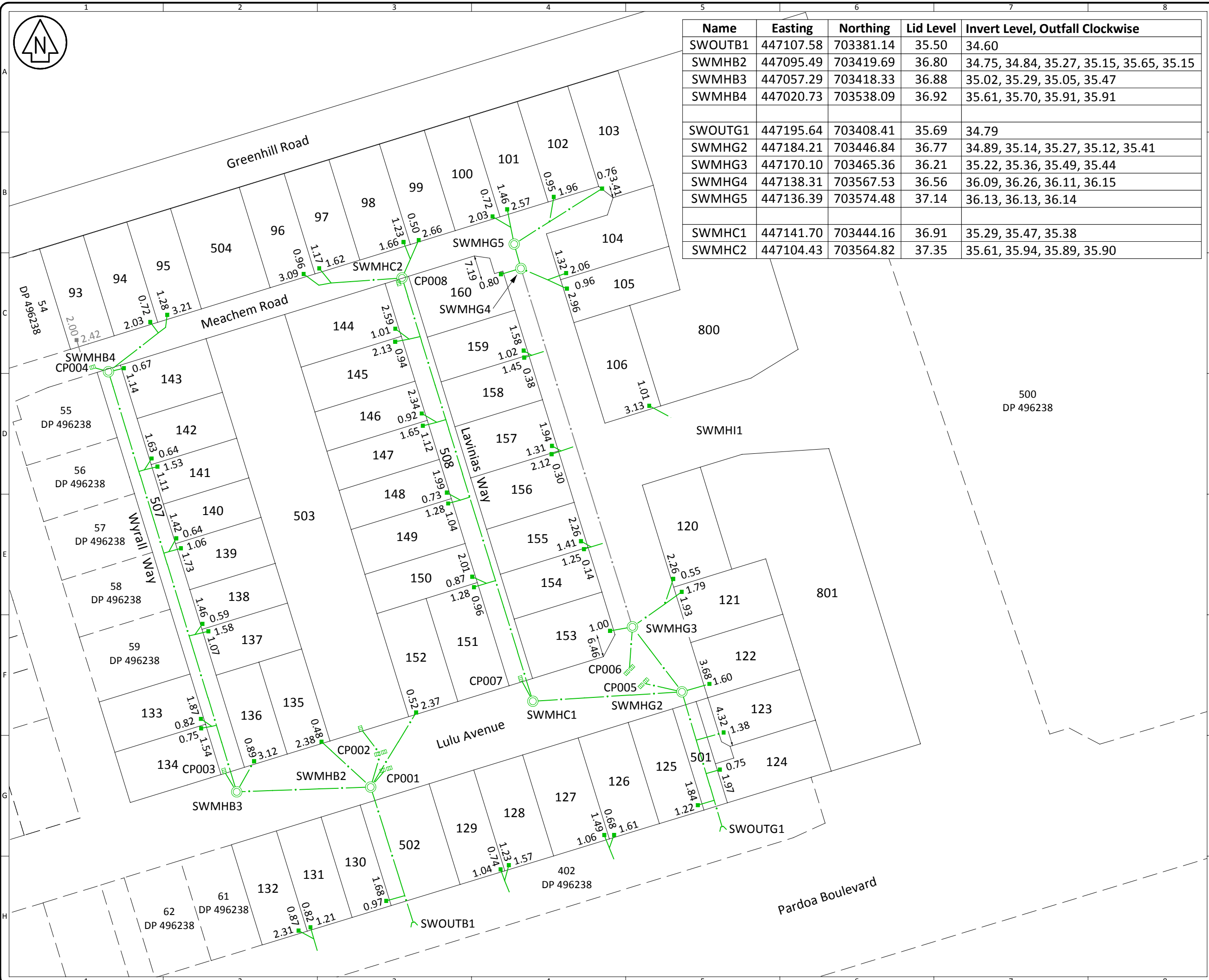
Name	Easting	Northing	Lid Level	Invert Level, Outfall Clockwise
SWOUTB1	447107.58	703381.14	35.50	34.60
SWMHB2	447095.49	703419.69	36.80	34.75, 34.84, 35.27, 35.15, 35.65, 35.15
SWMHB3	447057.29	703418.33	36.88	35.02, 35.29, 35.05, 35.47
SWMHB4	447020.73	703538.09	36.92	35.61, 35.70, 35.91, 35.91
SWOUTG1	447195.64	703408.41	35.69	34.79
SWMHG2	447184.21	703446.84	36.77	34.89, 35.14, 35.27, 35.12, 35.41
SWMHG3	447170.10	703465.36	36.21	35.22, 35.36, 35.49, 35.44
SWMHG4	447138.31	703567.53	36.56	36.09, 36.26, 36.11, 36.15
SWMHG5	447136.39	703574.48	37.14	36.13, 36.13, 36.14
SWMHC1	447141.70	703444.16	36.91	35.29, 35.47, 35.38
SWMHC2	447104.43	703564.82	37.35	35.61, 35.94, 35.89, 35.90

**Notes:**

Coordinates are in terms of Mt Eden 2000 Circuit

Levels are in terms of Moturiki Vertical Datum 1953  
 Origin of Levels: SS507 SO 42451 (EP6K) RL:44.04  
 Source: LINZ Geodetic Database  
 Location: Corner of Carrs Road and Tramway Road (under cover)

Lot Connections and Service Lines plotted from data supplied by Online Contractors



CKD BY	REV No.	DESCRIPTION	DATE
	1	SWMHC2 Lid Level Added	07/18
	0	Issued For Work Clearance	05/18

	NAME	DATE	SIGNED
Surveyed	SRC	Various	
Designed	SM	07/17	
Drawn	SRC	05/18	
Checked	SRC	05/18	
Approved	TMB	05/18	

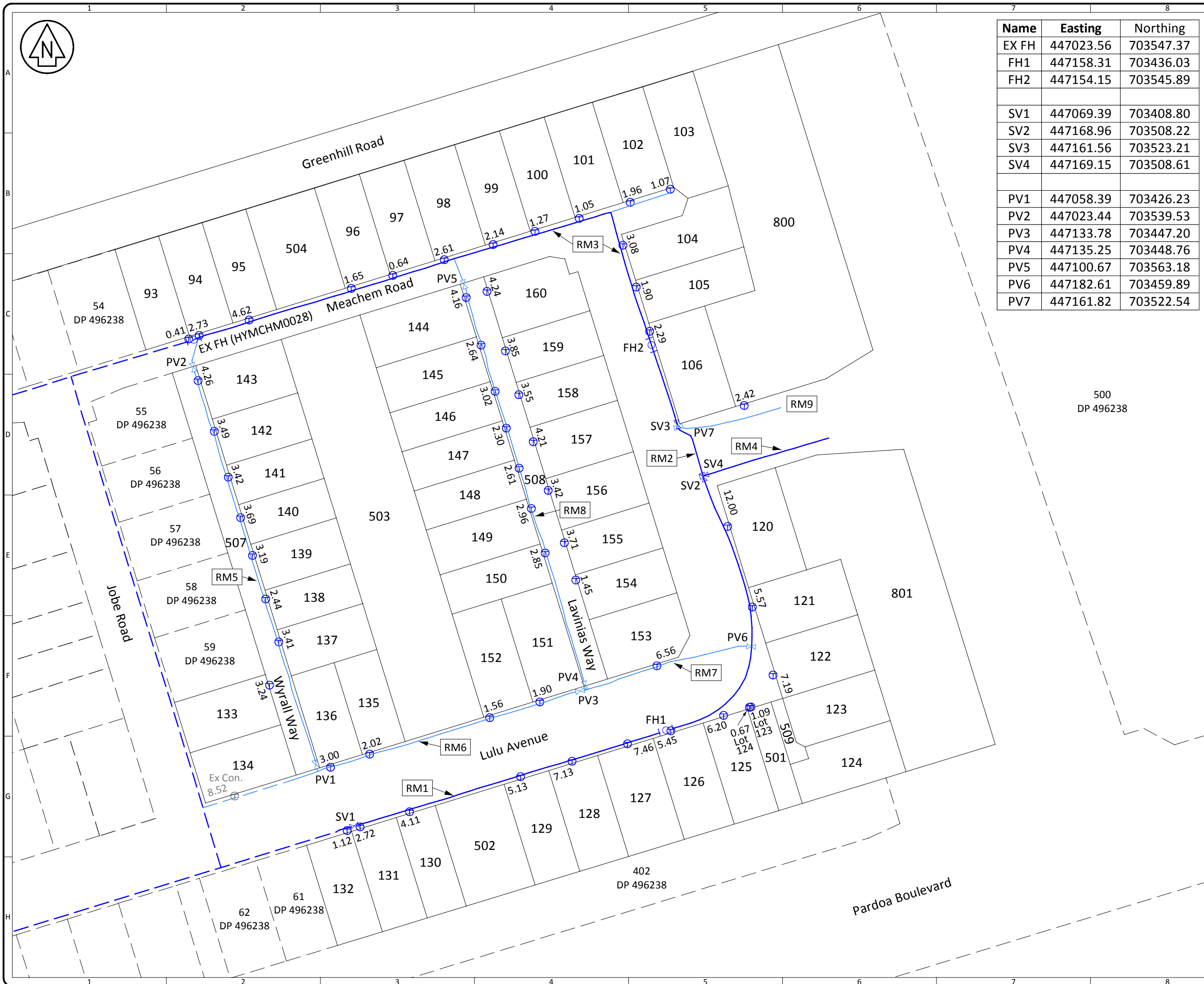
HCC Ref:  
011.2015.6025.007

**S & L CONSULTANTS LTD**  
 SURVEYORS - ENGINEERS - PLANNERS  
 36 Kereti Street, Mt Maunganui, New Zealand  
 P.O. Box 231 Ph:(07)577-6069  
 Fax:(07)577-6065  
 Email: slconsultants@slga.co.nz  
 Web Site: www.slga.co.nz

Title  
**Stormwater Asbuilt Plan Stage 4**

Copyright on this drawing is reserved

Original Scales @ A3	Date
1:1000	05/18
Do Not Scale Dimensions	
Drawing No	Revision
20413 - AB11	1



Name	Easting	Northing
EX FH	447023.56	703547.37
FH1	447158.31	703436.03
FH2	447154.15	703545.89
SV1	447069.39	703408.80
SV2	447168.96	703508.22
SV3	447161.56	703523.21
SV4	447169.15	703508.61
PV1	447058.39	703426.23
PV2	447023.44	703539.53
PV3	447133.78	703447.20
PV4	447135.25	703448.76
PV5	447100.67	703563.18
PV6	447182.61	703459.89
PV7	447161.82	703522.54

**Notes:**

Coordinates are in terms of Mt Eden 2000 Circuit  
 Levels are in terms of Moturiki Vertical Datum 1953  
 Origin of Levels: SS507 SO 42451 (EP6K) RL:44.04  
 Source: LINZ Geodetic Database  
 Location: Corner of Carrs Road and Tramway Road (under cover)

Watermains plotted from data supplied by Online Contractors

**Key**

	Water Pipe - 150
	Water Pipe - 63
	Existing Water Pipe - 150
	Existing Water Pipe - 63
	Fire Hydrant
	Sluice Valve
	Peet Valve
	Water Connection

CKD BY	REV No.	DESCRIPTION	DATE
	0	Issued For Work Clearance	05/18

	NAME	DATE	SIGNED
Surveyed	SRC	Various	
Designed	SM	07/17	
Drawn	SRC	05/18	
Checked	SRC	05/18	
Approved	TMB	05/18	

HCC Ref:  
**011.2015.6025.007**

**S & L CONSULTANTS LTD**  
 SURVEYORS - ENGINEERS - PLANNERS  
 36 Kereti Street, Mt Maunganui, New Zealand  
 P.O. Box 231 Ph:(07)577-6069  
 Fax:(07)577-6065  
 Email: slconsultants@slga.co.nz  
 Web Site: www.slga.co.nz

Title  
**Water Asbuilt Plan  
 Stage 4**

Copyright on this drawing is reserved  
 Original Scales @ A3 Date  
**1:1000** **05/18**  
 Do Not Scale Dimensions  
 Drawing No **20413 - AB12** Revision **0**





Name	Easting	Northing
SL1	447004.99	703534.67
SL3	447053.37	703549.61
SL4	447085.91	703429.00
SL5	447099.12	703563.93
SL6	447121.68	703440.49
SL7	447145.23	703577.70
SL8	447152.56	703551.47
SL9	447157.21	703514.19
SL10	447164.21	703453.39
SL11	447174.07	703512.79
SL12	447176.47	703474.57

**Notes:**

Coordinates are in terms of Mt Eden 2000 Circuit

Levels are in terms of Moturiki Vertical Datum 1953  
Origin of Levels: SS507 SO 42451 (EP6K) RL:44.04  
Source: LINZ Geodetic Database  
Location: Corner of Carrs Road and Tramway Road (under cover)

**Key**

- Ponding Limit Line before spilling over to Secondary Flow
- Secondary Flow Path
- Spill Over Level
- Max Ponding Depth (on Road)
- Kerb Let-Downs

CKD BY	REV No.	DESCRIPTION	DATE
	2	Bridge Added	07/18
	1	Kerb Let-Downs Added	07/18
	0	Issued For Work Clearance	05/18

	NAME	DATE	SIGNED
Surveyed	SRC	Various	
Designed	IBEX	11/17	
Drawn	SRC	05/18	
Checked	SRC	05/18	
Approved	TMB	05/18	

References  
**HCC Ref:**  
011.2015.6025.007

**S & L CONSULTANTS LTD**  
SURVEYORS - ENGINEERS - PLANNERS  
36 Kereti Street, Mt Maunganui, New Zealand  
P.O. Box 231 Ph.(07)577-6069  
Fax(07)577-6065  
Email: slconsultants@sltga.co.nz  
Web Site: www.sltga.co.nz

Title  
**Roading Asbuilt Plan Stage 4**

Copyright on this drawing is reserved  
Original Scales @ A3 Date  
**1:1000** 05/18  
Do Not Scale Dimensions  
Drawing No. Revision  
**20413 - AB13** 2